

I REQUIRE THIS PLAN TO BE DEPOSITED UNDER THE LAND TITLES ACT.

PLAN 50R-6774

JUNE 22, 1990

RECEIVED AND DEPOSITED

June 25, 1990

R.L. Burton

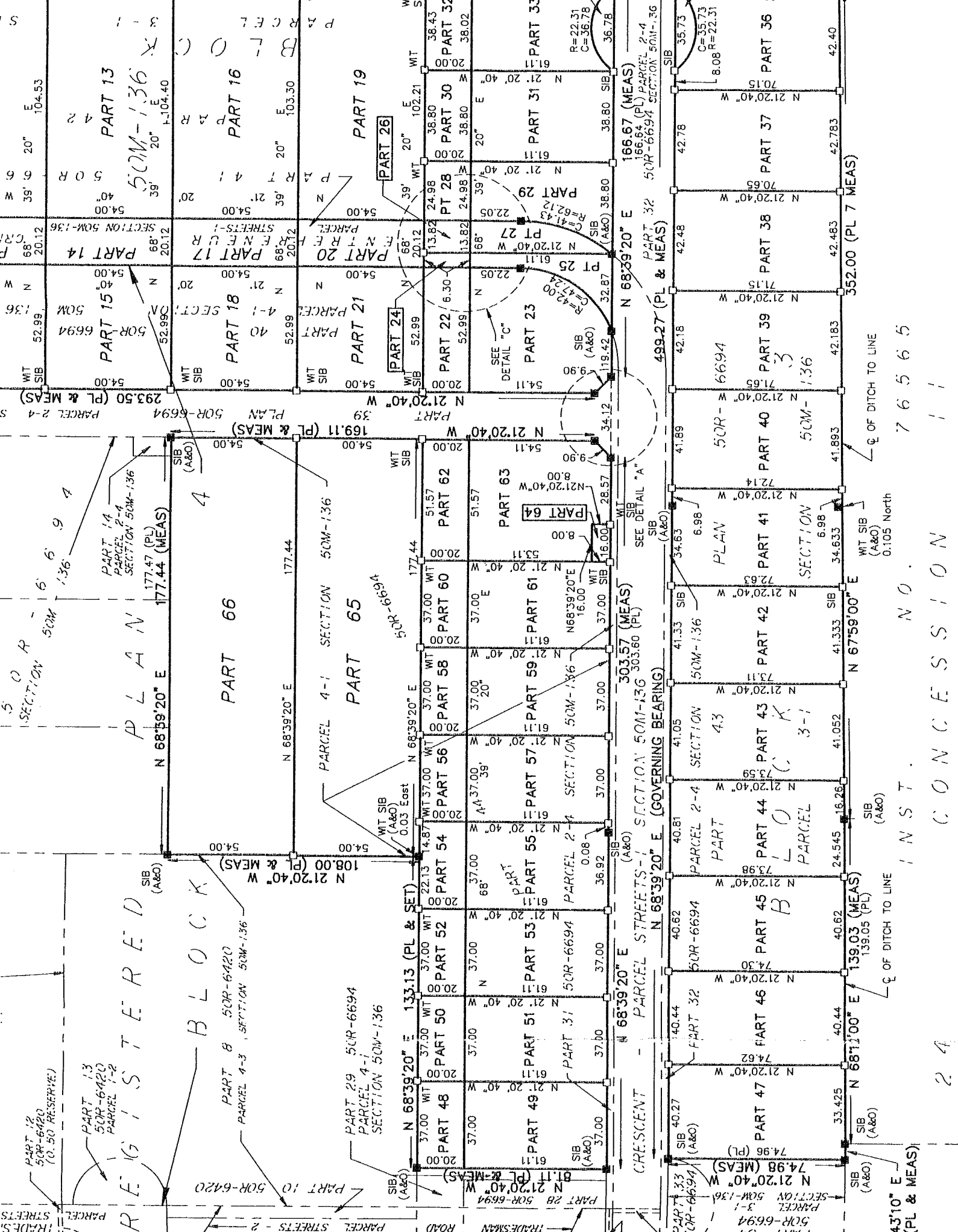
R.L. BURTON
ONTARIO LAND SURVEYOR

"T. Corvinelli" Dep.

LAND REGISTRAR FOR THE
LAND TITLES DIVISION OF
RUSSELL NO. 50

SCHEDULE

PART	PART OF BLOCK OF STREET	PLAN	PART OF PARCEL	SECTION	AREA (m2)
1			1-4		64.0
2			ALL OF THE REMAINDER OF PARCEL 1-1		4047.8
3					4461.5
4					635.9
5	3		3-1		6013.9
6	ENTREPRENEUR		STREETS-1		219.5
7	3		3-1		19902.2
8	ENTREPRENEUR		STREETS-1		2133.3
9	4		4-1		1923.0
10	3		3-1		7263.4
11	ENTREPRENEUR		STREETS-1		1280.9
12	4		4-1		3180.4
13	3		3-1		5653.5
14	ENTREPRENEUR		STREETS-1		1086.5
15	4		4-1		2861.5
16	3		3-1		5607.8
17	ENTREPRENEUR		STREETS-1		1086.5
18	4		4-1		2861.5
19	3		3-1		5548.7
20	ENTREPRENEUR		STREETS-1		1086.5
21					2861.5
22	4		4-1		1059.8
23					2928.1
24					126.0
25	ENTREPRENEUR		STREETS-1		670.7
26					276.4
27					673.4
28					499.6
29					1697.6
30					776.0
31					2371.1
32					764.5
33		50M-136		50M-136	2035.6
34					250.0
35					223.4
36					2789.4
37	3		3-1		3011.7
38					3011.8
39					3011.7
40					3011.7
41					3012.0
42					3011.7
43					3011.0
44					3011.7



TRADES
PARCEL STREETS

PART 12
50R-6420
(0.50 RESERVE)

PART 13
50R-6420
PARCEL 1-2

PART 14
50R-6420
SECTION 50M-136

PART 10
50R-6420

PART 13
50M-136
E 104.53
S 20' 39' 6\"/>

PART 14
50M-136
E 52.99
S 20' 39' 6\"/>

PART 15
50M-136
E 52.99
S 20' 39' 6\"/>

PART 16
50M-136
E 103.30
S 20' 39' 6\"/>

PART 17
50M-136
E 104.40
S 20' 39' 6\"/>

PART 18
50M-136
E 52.99
S 20' 39' 6\"/>

PART 19
50M-136
E 102.21
S 20' 39' 6\"/>

PART 20
50M-136
E 54.00
S 20' 39' 6\"/>

PART 21
50M-136
E 52.99
S 20' 39' 6\"/>

PART 22
50M-136
E 52.99
S 20' 39' 6\"/>

PART 23
50M-136
E 54.11
S 20' 39' 6\"/>

PART 24
50M-136
E 54.00
S 20' 39' 6\"/>

PART 25
50M-136
E 61.11
S 20' 39' 6\"/>

PART 26
50M-136
E 102.21
S 20' 39' 6\"/>

PART 27
50M-136
E 22.05
S 20' 39' 6\"/>

PART 28
50M-136
E 24.98
S 20' 39' 6\"/>

PART 29
50M-136
E 38.80
S 20' 39' 6\"/>

PART 30
50M-136
E 38.80
S 20' 39' 6\"/>

PART 31
50M-136
E 61.11
S 20' 39' 6\"/>

PART 32
50M-136
E 38.80
S 20' 39' 6\"/>

PART 33
50M-136
E 36.78
S 20' 39' 6\"/>

PART 34
50M-136
E 36.73
S 20' 39' 6\"/>

PART 35
50M-136
E 35.73
S 20' 39' 6\"/>

PART 36
50M-136
E 22.31
S 20' 39' 6\"/>

PART 37
50M-136
E 42.78
S 20' 39' 6\"/>

PART 38
50M-136
E 42.48
S 20' 39' 6\"/>

PART 39
50M-136
E 42.18
S 20' 39' 6\"/>

PART 40
50M-136
E 42.18
S 20' 39' 6\"/>

PART 41
50M-136
E 41.89
S 20' 39' 6\"/>

PART 42
50M-136
E 41.89
S 20' 39' 6\"/>

PART 43
50M-136
E 41.05
S 20' 39' 6\"/>

PART 44
50M-136
E 41.05
S 20' 39' 6\"/>

PART 45
50M-136
E 41.05
S 20' 39' 6\"/>

PART 46
50M-136
E 40.82
S 20' 39' 6\"/>

PART 47
50M-136
E 40.44
S 20' 39' 6\"/>

PART 48
50M-136
E 37.00
S 20' 39' 6\"/>

PART 49
50M-136
E 37.00
S 20' 39' 6\"/>

PART 50
50M-136
E 37.00
S 20' 39' 6\"/>

PART 51
50M-136
E 37.00
S 20' 39' 6\"/>

PART 52
50M-136
E 37.00
S 20' 39' 6\"/>

PART 53
50M-136
E 37.00
S 20' 39' 6\"/>

PART 54
50M-136
E 37.00
S 20' 39' 6\"/>

PART 55
50M-136
E 37.00
S 20' 39' 6\"/>

PART 56
50M-136
E 37.00
S 20' 39' 6\"/>

PART 57
50M-136
E 37.00
S 20' 39' 6\"/>

ROAD

TRADESMAN

CRESCENT

PARCEL STREETS-1

SECTION 50M-136

(GOVERNING BEARING)

N 68°39'20\"/>

E 139.03 (MEAS)

139.05 (PL)

E 43°10' (PL & MEAS)

76565

76565

76565

76565

76565

76565

76565

76565

76565

76565

INST.

CONCESSION

NO.

76565

76565

76565

76565

76565

76565

76565

76565

76565

76565

76565

76565

76565

76565

76565

76565

76565

76565

76565

76565

76565

76565

76565

76565

76565

76565

76565

76565

76565

76565

76565

76565

76565

76565

76565

76565

76565

I REQUIRE THIS PLAN TO BE DEPOSITED UNDER THE LAND TITLES ACT.

DATE April 27th 1990

Edward M. Lancaster

EDWARD M. LANCASTER
ONTARIO LAND SURVEYOR

PLAN 50R-6694

RECEIVED AND DEPOSITED

DATED APR 27, 1990

J. M. FATICA SRDER

LAND REGISTRAR FOR THE
LAND TITLES DIVISION OF
RUSSELL No. 50.

CAUTION: This plan is not a plan of subdivision within the meaning of The Planning Act.

PARTS I TO 8 BOTH INCLUSIVE , PARTS 32 TO 38 BOTH INCLUSIVE & PARTS 42 & 43 ALL OF PARCEL 3-1 SECTION 50M-136

PARTS II TO 18 BOTH INCLUSIVE , PARTS 28, 29, 31, 39, 40 & PARTS 44 TO 46 BOTH INCLUSIVE REMAINDER OF PARCEL 4-1 SECTION 50M-136

PARTS 19 TO 24 BOTH INCLUSIVE & PART 30 REMAINDER OF PARCEL 2-1 SECTION 50M-136

PARTS 9, 10 & 41 PART OF PARCEL STREET-1 SECTION 50M-136

PARTS 25, 26 & 27 REMAINDER OF PARCEL STREET-2 SECTION 50M-136

PLAN OF SURVEY OF

**BLOCK 3 and
PART OF BLOCKS 2 & 4 and
PART OF ENTREPRENEUR CRESCENT
PART OF TRADESMAN ROAD
REGISTERED PLAN 50M-136
TOWNSHIP OF CUMBERLAND
REGIONAL MUNICIPALITY OF
OTTAWA-CARLETON**

SURVEYED BY
ANNIS, O'SULLIVAN, VOLLEBEKK LTD.
1990

SCALE 1 : 1500



DISTANCES SHOWN ON THIS PLAN ARE IN METRES
AND CAN BE CONVERTED TO FEET BY DIVIDING BY
0.3048

SURVEYOR'S CERTIFICATE

I HEREBY CERTIFY THAT:

1. This survey and plan are correct and in accordance with The Surveys Act and The Land Titles Act and the regulations made thereunder.
2. The survey was completed on the 24th day of April 1990.

April 27th 1990
Date

Edward M. Lancaster
EDWARD M. LANCASTER
ONTARIO LAND SURVEYOR

NOTES & LEGEND

Planted Survey Monument shown thus
 Found Survey Monument shown thus
 Standard Iron Bar (0.025sq. X 1.22) shown thus
 Short Standard Iron Bar (0.025sq. X 0.61) shown thus
 Iron Bar (0.016sq. X 0.61) shown thus
 Iron Bar Round (0.019 ϕ X 0.61) shown thus
 Round Iron Bar shown thus
 Cut Cross shown thus
 Fd. denotes Found
 Acc. " Accepted
 Wit. " Witness
 P&W " Post & Wire
 (AOG) " Annis, O'Sullivan, Vollebekk Ltd.
 (671) " F.H. Gooch O.L.S.
 (RMOC) " Regional Municipality of Ottawa-Carleton
 (Plan) " 50R-136

□
 ■
 S.I.B.
 S.S.I.B.
 I.B.
 I.B. ϕ
 R.I.B.
 C.C.

FROM THE OFFICE OF
 ANNIS, O'SULLIVAN, VOLLEBEKK LTD.
 ONTARIO LAND SURVEYORS
 EMBRUN-RUSSELL, NEPEAN & ORLEANS ONTARIO

TOWNSHIP

ROAD ALLOWANCE BETWEEN TOWNSHIPS

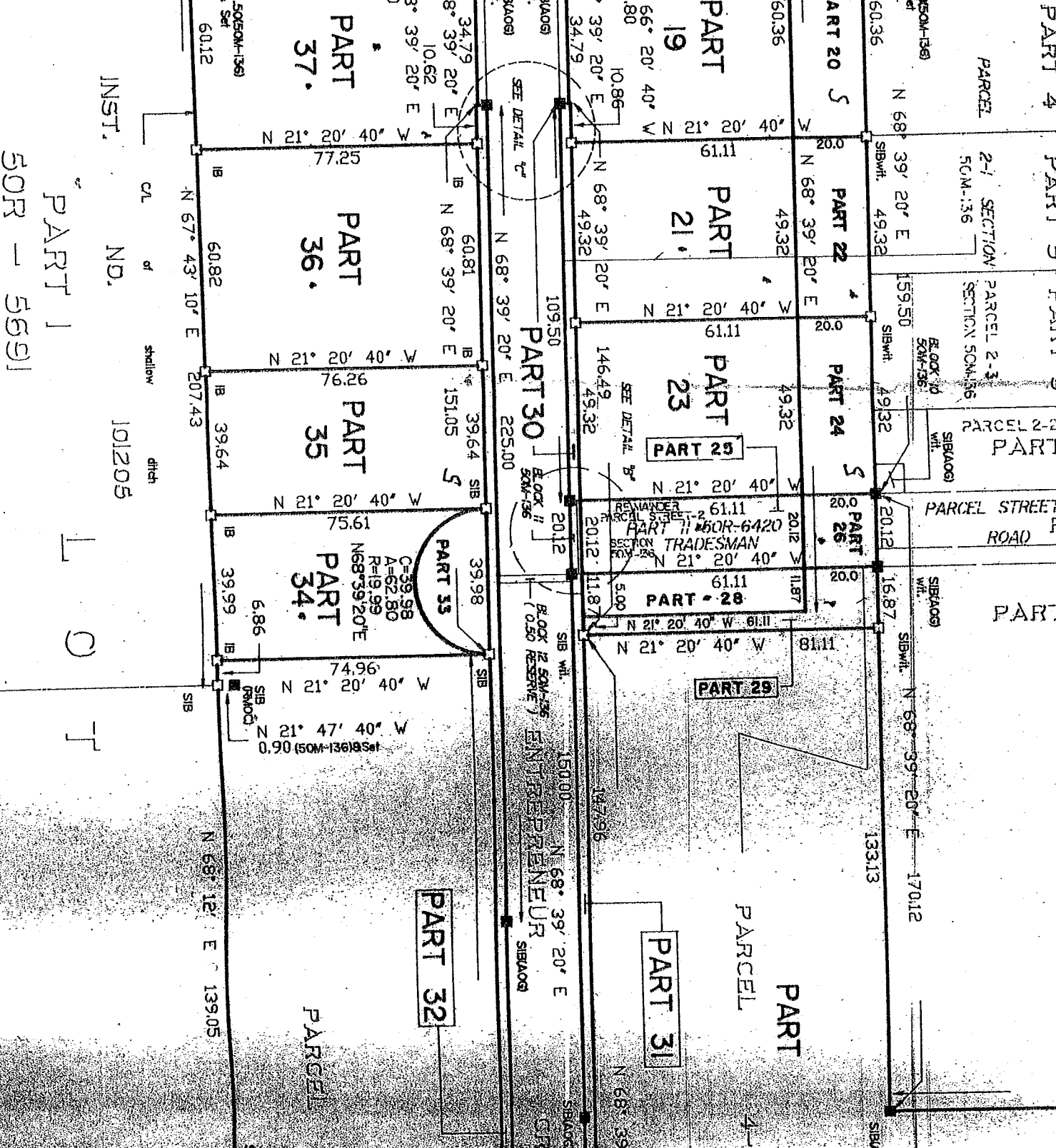
PART 6 EXPROPRIATION PLAN INST.

BLOCK 7 50M-136 (0.50 RESERVE) PARCEL 7-1 3

PARCEL 6-1 SECTION 50M-136
BLOCK 6 50M-136 (0.50 RESERVE)

PART 7
INST. NO. 65888
Q.C.D. INST. 69504

TOWNSHIP



INST.

NO.

101205

shallow ditch

PART 1
50R - 5691

PARCEL 32

PARCEL 31

PARCEL PART

PARCEL STREET ROAD

PARCEL 2-2 PART

PARCEL 2-3 SECTION 50M-136

PARCEL 2-1 SECTION 50M-136

PARCEL PART 4

PARCEL PART 5

PARCEL PART 6

PARCEL PART 7

0.50(50M-136) & Set

159.50 SIBWIT.

16.87 SIBWIT.

170.12 SIBWIT.

133.13 SIBWIT.

60.36 SIBWIT.

49.32 SIBWIT.

49.32 SIBWIT.

20.12 SIBWIT.

11.87 SIBWIT.

81.11 SIBWIT.

133.13 SIBWIT.

20.0 SIBWIT.

20.0 SIBWIT.

20.0 SIBWIT.

20.12 SIBWIT.

20.12 SIBWIT.

20.12 SIBWIT.

20.12 SIBWIT.

60.36 SIBWIT.

49.32 SIBWIT.

49.32 SIBWIT.

20.12 SIBWIT.

11.87 SIBWIT.

81.11 SIBWIT.

133.13 SIBWIT.

48.84 SIBWIT.

61.11 SIBWIT.

61.11 SIBWIT.

61.11 SIBWIT.

61.11 SIBWIT.

61.11 SIBWIT.

61.11 SIBWIT.

20.80 SIBWIT.

10.86 SIBWIT.

10.86 SIBWIT.

10.86 SIBWIT.

10.86 SIBWIT.

10.86 SIBWIT.

10.86 SIBWIT.

34.79 SIBWIT.

34.79 SIBWIT.

34.79 SIBWIT.

34.79 SIBWIT.

34.79 SIBWIT.

34.79 SIBWIT.

34.79 SIBWIT.

10.62 SIBWIT.

10.62 SIBWIT.

10.62 SIBWIT.

10.62 SIBWIT.

10.62 SIBWIT.

10.62 SIBWIT.

10.62 SIBWIT.

20.80 SIBWIT.

20.80 SIBWIT.

20.80 SIBWIT.

20.80 SIBWIT.

20.80 SIBWIT.

20.80 SIBWIT.

20.80 SIBWIT.

34.79 SIBWIT.

34.79 SIBWIT.

34.79 SIBWIT.

34.79 SIBWIT.

34.79 SIBWIT.

34.79 SIBWIT.

34.79 SIBWIT.

10.62 SIBWIT.

10.62 SIBWIT.

10.62 SIBWIT.

10.62 SIBWIT.

10.62 SIBWIT.

10.62 SIBWIT.

10.62 SIBWIT.

20.80 SIBWIT.

20.80 SIBWIT.

20.80 SIBWIT.

20.80 SIBWIT.

20.80 SIBWIT.

20.80 SIBWIT.

20.80 SIBWIT.

34.79 SIBWIT.

34.79 SIBWIT.

34.79 SIBWIT.

34.79 SIBWIT.

34.79 SIBWIT.

34.79 SIBWIT.

34.79 SIBWIT.

10.62 SIBWIT.

10.62 SIBWIT.

10.62 SIBWIT.

10.62 SIBWIT.

10.62 SIBWIT.

10.62 SIBWIT.

10.62 SIBWIT.

20.80 SIBWIT.

20.80 SIBWIT.

20.80 SIBWIT.

20.80 SIBWIT.

20.80 SIBWIT.

20.80 SIBWIT.

20.80 SIBWIT.

34.79 SIBWIT.

34.79 SIBWIT.

34.79 SIBWIT.

34.79 SIBWIT.

34.79 SIBWIT.

34.79 SIBWIT.

34.79 SIBWIT.

10.62 SIBWIT.

10.62 SIBWIT.

10.62 SIBWIT.

10.62 SIBWIT.

10.62 SIBWIT.

10.62 SIBWIT.

10.62 SIBWIT.

20.80 SIBWIT.

20.80 SIBWIT.

20.80 SIBWIT.

20.80 SIBWIT.

20.80 SIBWIT.

20.80 SIBWIT.

20.80 SIBWIT.

34.79 SIBWIT.

34.79 SIBWIT.

34.79 SIBWIT.

34.79 SIBWIT.

34.79 SIBWIT.

34.79 SIBWIT.

34.79 SIBWIT.

10.62 SIBWIT.

10.62 SIBWIT.

10.62 SIBWIT.

10.62 SIBWIT.

10.62 SIBWIT.

10.62 SIBWIT.

10.62 SIBWIT.

20.80 SIBWIT.

20.80 SIBWIT.

20.80 SIBWIT.

20.80 SIBWIT.

20.80 SIBWIT.

20.80 SIBWIT.

20.80 SIBWIT.

34.79 SIBWIT.

34.79 SIBWIT.

34.79 SIBWIT.

34.79 SIBWIT.

34.79 SIBWIT.

34.79 SIBWIT.

34.79 SIBWIT.

PART 19

PART 20

PART 21

PART 22

PART 23

PART 24

PART 25

PART 26

PART 27

PART 28

PART 29

PART 30

PART 31

PART 32

PART 33

PART 34

PART 35

PART 36

PART 37

C=39.98
A=62.80
R=19.99
N68°39'20"E

ENTREPRENEUR

TRADESMAN

50R-6420

50R-6420

50R-6420

50R-6420

50R-6420

50R-6420

50R-6420

50R-6420

50R-6420

50R-6420

50R-6420

50R-6420

50R-6420

50R-6420

50R-6420

50R-6420

50R-6420

50R-6420

50R-6420

50R-6420

50R-6420

INST.

NO.

101205

shallow ditch

CL

IB

IB

IB

IB

IB

IB

IB

IB

IB

IB

IB

IB

IB

IB

IB

IB

IB

IB

IB

IB

IB

IB

IB

IB

IB

INST.

NO.

101205

shallow ditch

CL

IB

IB

IB

IB

IB

IB

IB

IB

IB

IB

IB

IB

IB

IB

IB

IB

IB

IB

IB

IB

IB

IB

IB

IB

IB

INST.

NO.

101205

shallow ditch

CL

IB

IB

IB

IB

IB

IB

IB

IB

IB

IB

IB

IB

IB

IB

IB

IB

IB

IB

IB

IB